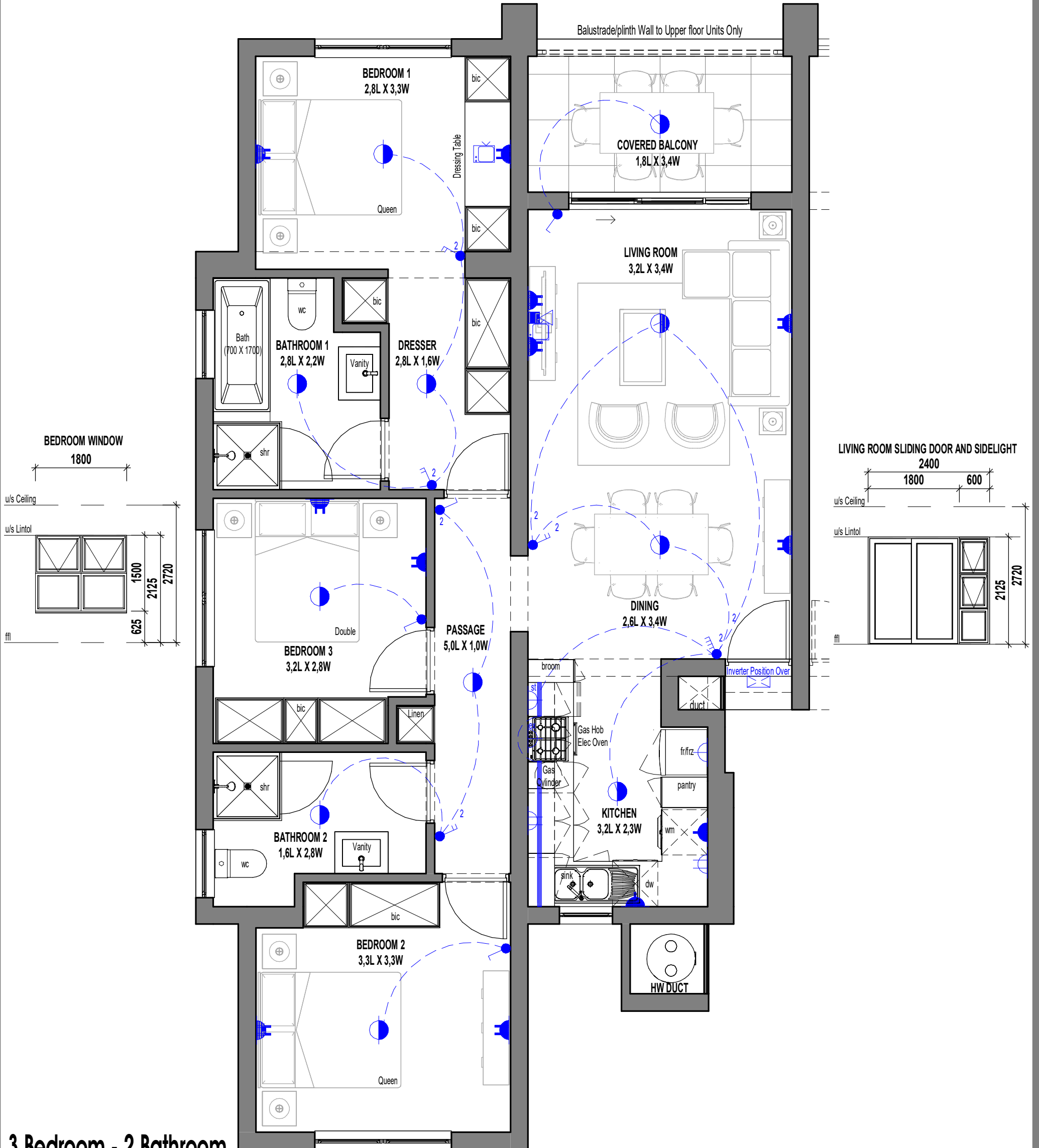
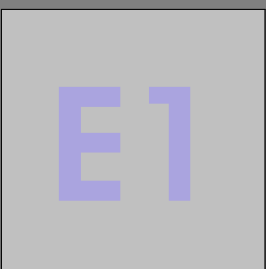


# ANNEXURE C FLOOR PLAN



3 Bedroom - 2 Bathroom

SCALE 1:50



**ELECTRICAL LEGEND**

- Surface Mounted LED Fitting
- ⊕ External Wall Mounted LED Light Fitting
- LED Strip Light Fitting (u/s - Eye levels - Kitchen)
- Single Light Switch
- Double Light Switch
- Triple Light Switch
- Two-Way Light Switch
- ⚡ Single Plug Point (300mm Above FFL)
- ⚡ Double Plug Point (300mm Above FFL)
- ⚡ Single Plug Point (150mm Above Counter)
- ⚡ Double Plug Point (150mm Above Counter)
- st ⚡ Stove Isolator (Above Counter)
- ex ⚡ Extractor Plug (High Level)
- ⚡ Distribution Board
- 📺 TV Point
- 📶 Fibre / Data Point
- ⚡ Inverter

**AREA  
TYPE E1**

Floor Area	91.70 m <sup>2</sup>
CovPatio/Balcony	7.24 m <sup>2</sup>
<b>Total</b>	<b>98.94 m<sup>2</sup></b>

\* The areas are approximate and shall vary from the areas reflected on the sectional title plan