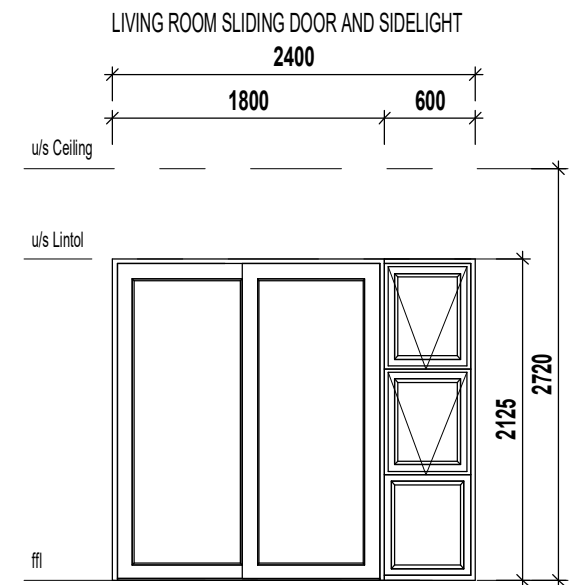
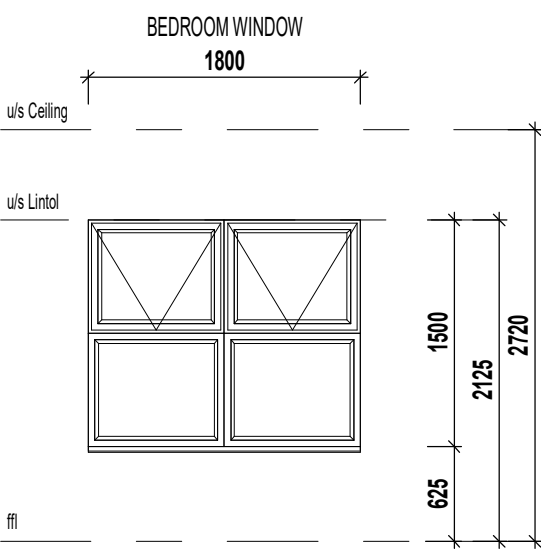
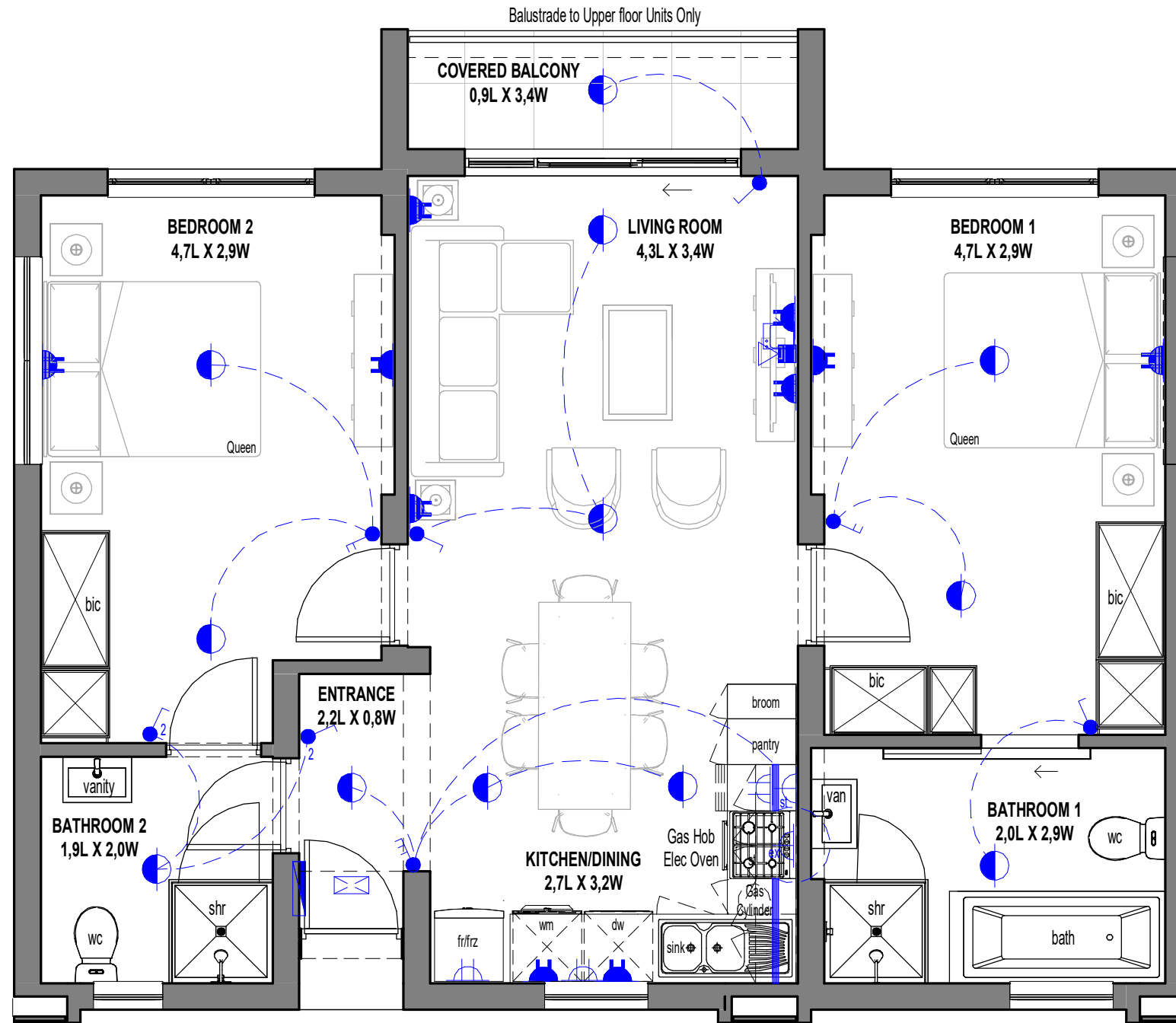


# ANNEXURE C FLOOR PLAN



2 Bedroom - 2 Bathroom

SCALE 1:50

D4

**ELECTRICAL LEGEND**

	Surface Mounted LED Fitting		Single Plug Point (300mm Above FFL)		Distribution Board
	External Wall Mounted LED Light Fitting		Double Plug Point (300mm Above FFL)		TV Point
	LED Strip Light Fitting (u/s - Eye levels - Kitchen)		Single Plug Point (150mm Above Counter)		Fibre / Data Point
	Single Light Switch		Double Plug Point (150mm Above Counter)		
	Double Light Switch		Stove Isolator (Above Counter)		
	Triple Light Switch		Extractor Plug (High Level)		
	Two-Way Light Switch				

**AREA TYPE D4**

Floor Area	75.03 m <sup>2</sup>
Balcony	3.97 m <sup>2</sup>
Total	79.00 m <sup>2</sup>

\* The areas are approximate and shall vary from the areas reflected on the sectional title plan